



Water Supply and Budget Update

San Ramon City Council

June 27, 2023



Water Supply and Budget Update

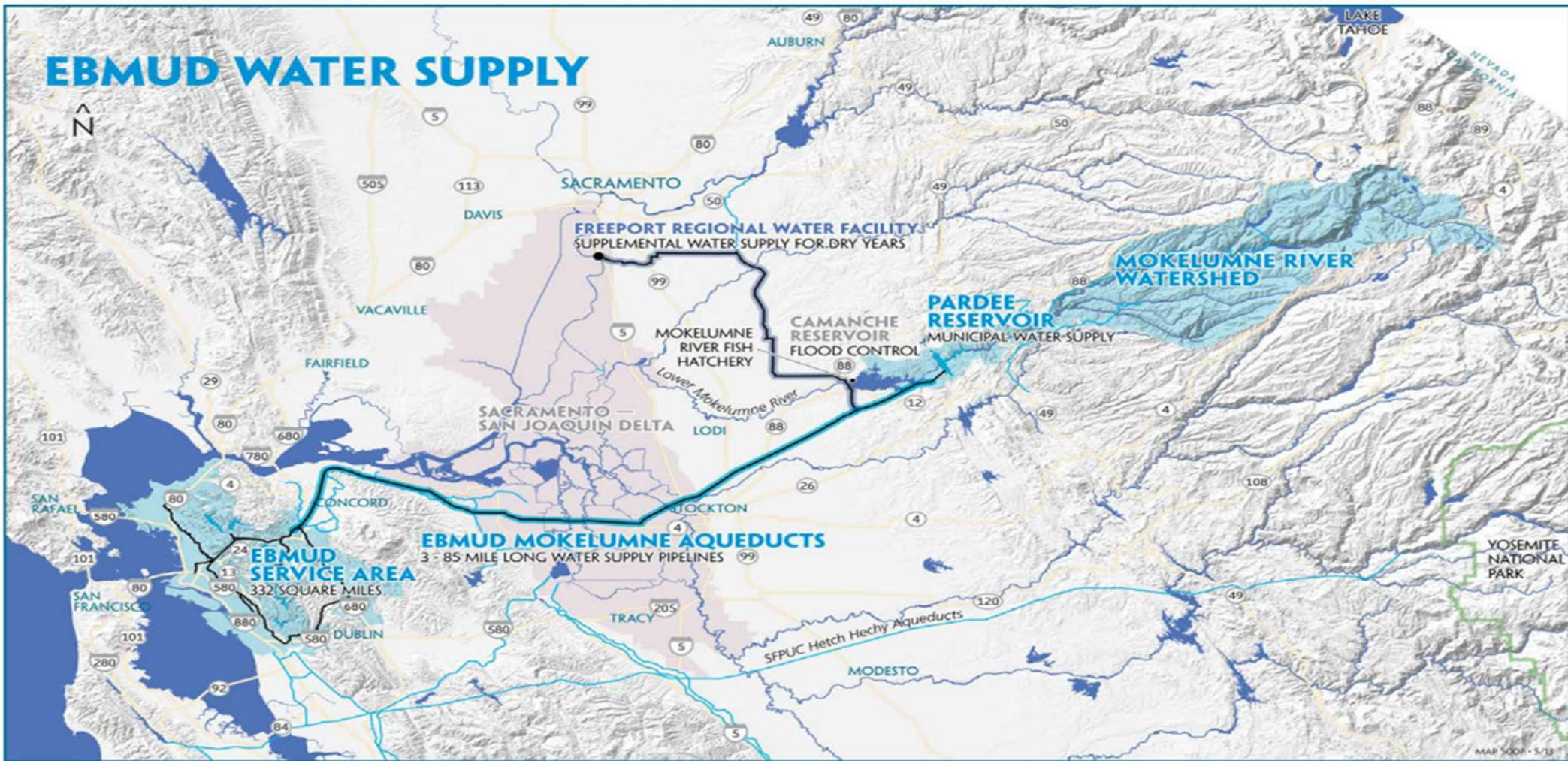
- Current Water Supply
- California Water Supply
- Water Supply Projections
- Budget Update
- Questions

*San Pablo and Briones Reservoirs – J. Urness,
March 2023*

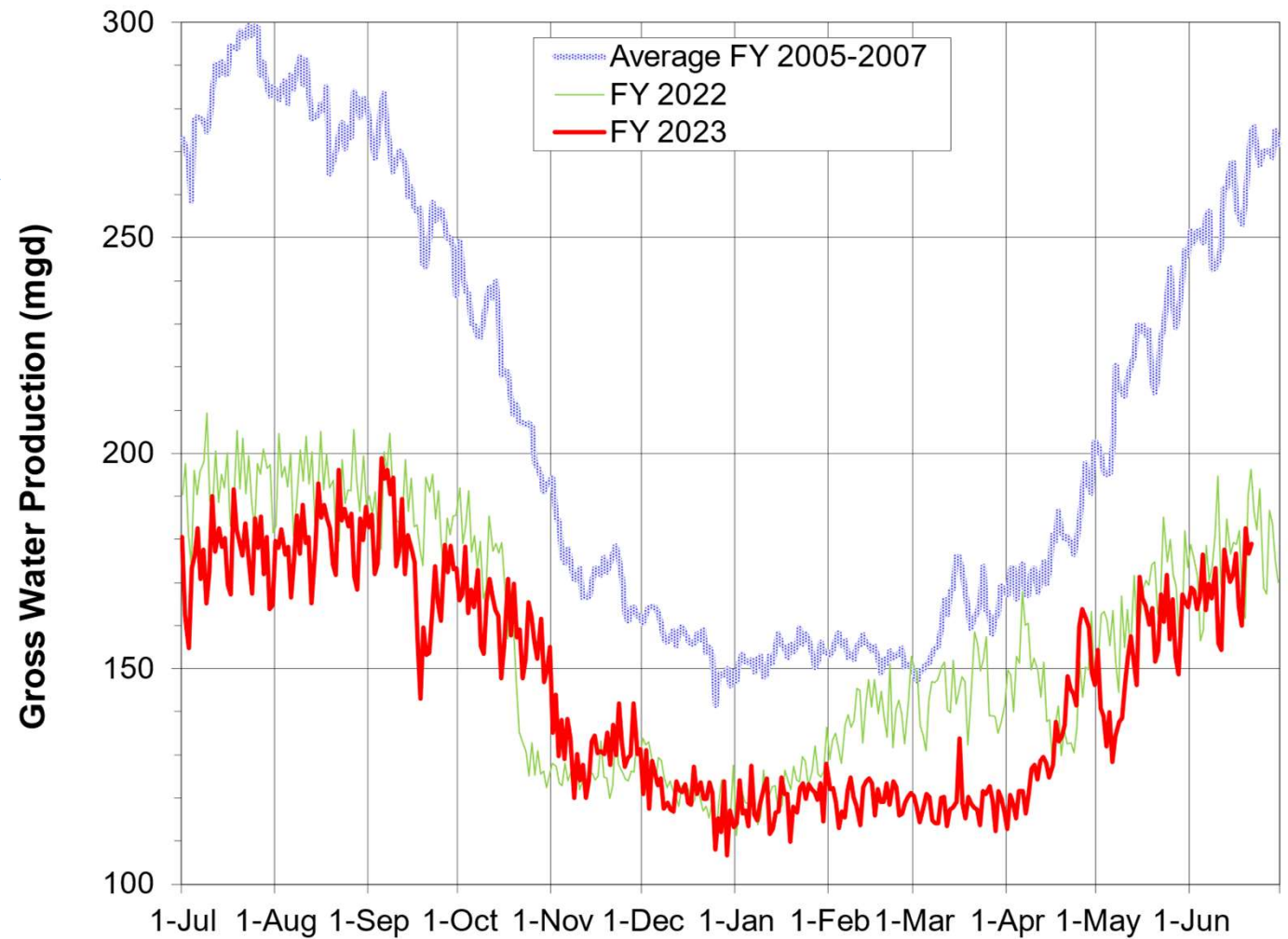
Current Water Supply



EBMUD WATER SUPPLY

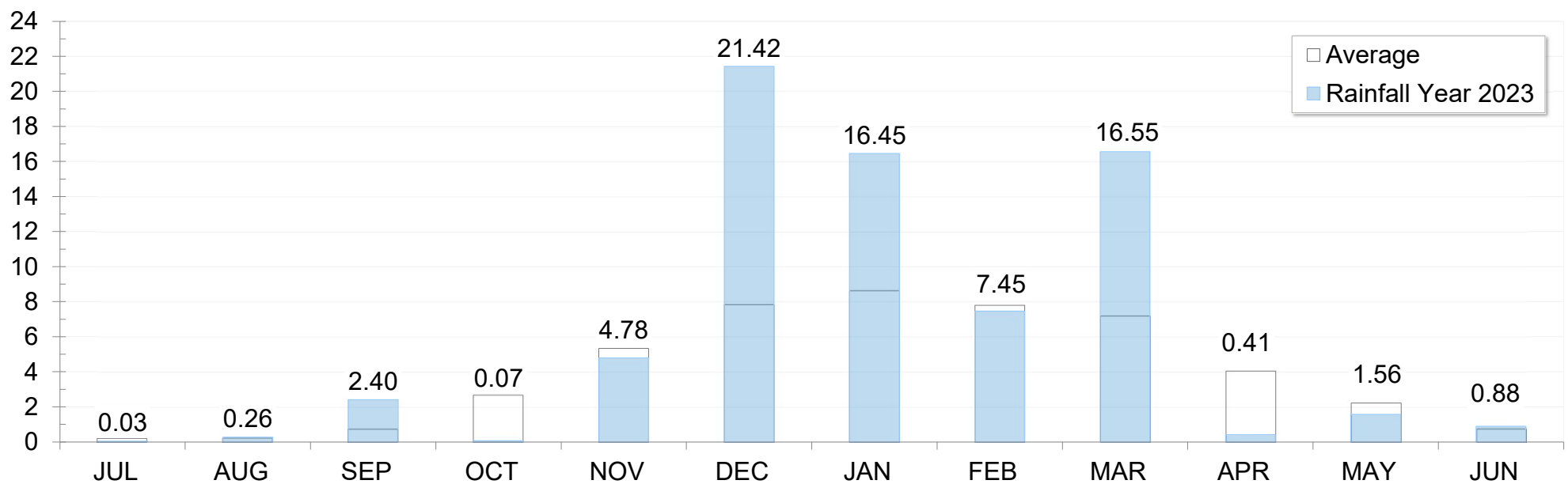


Gross Water Production



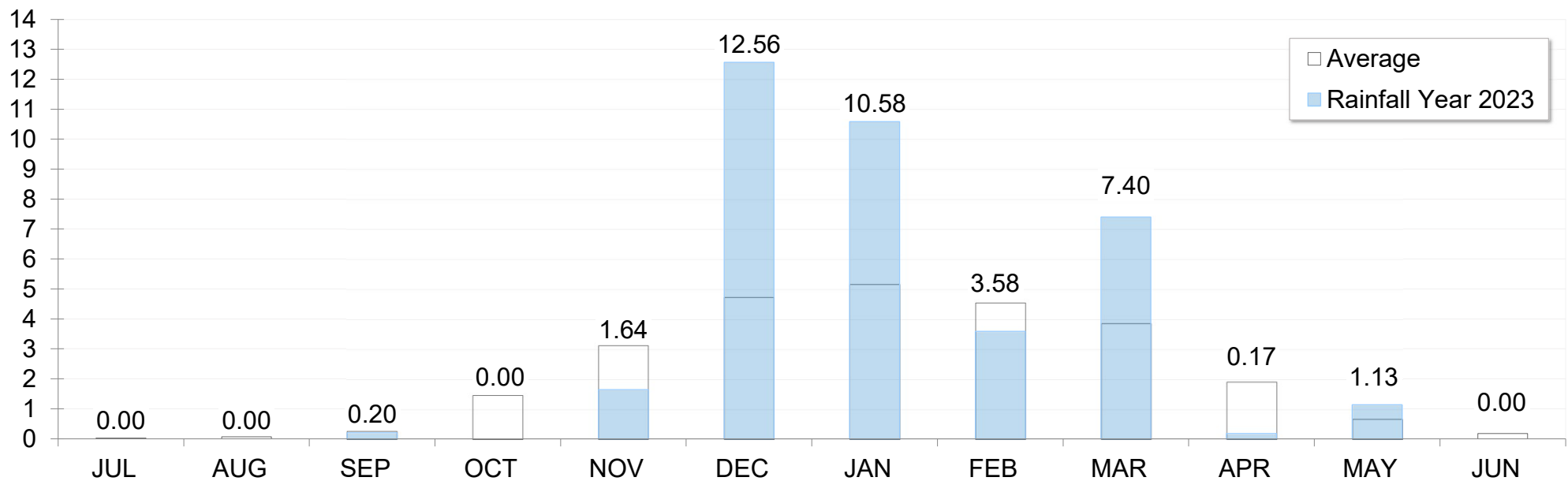
Mokelumne Precipitation

Through June 21: 72.26" (150% of Average)

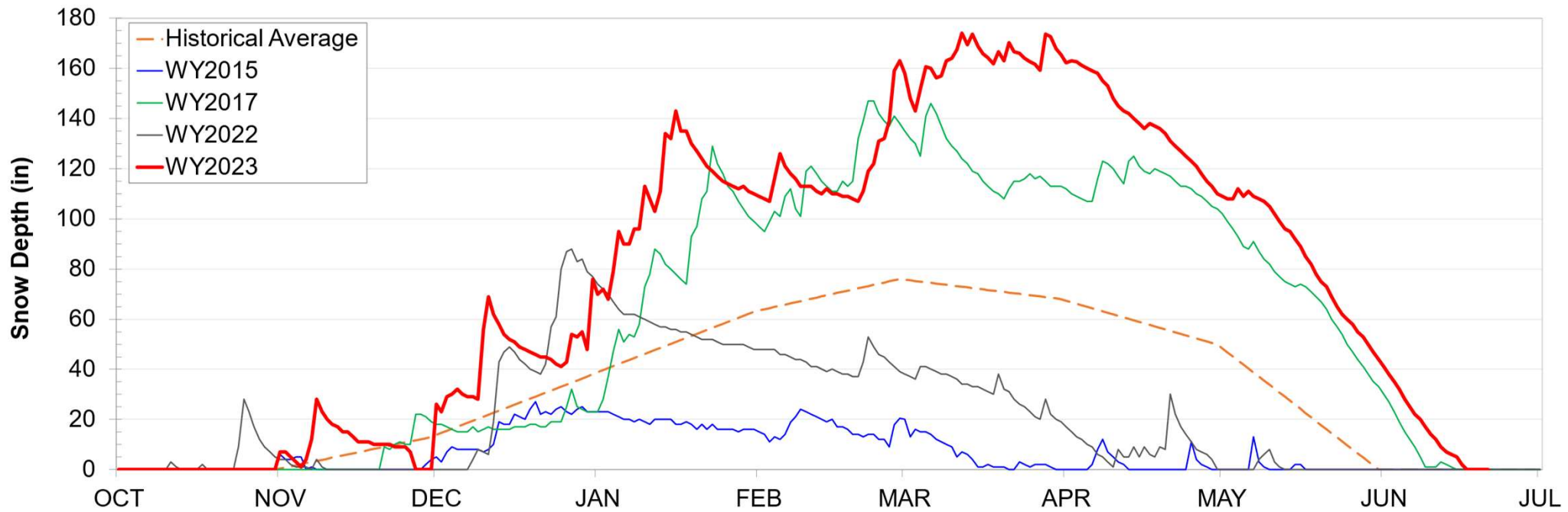


East Bay Precipitation

Through June 21: 37.24" (139% of average)



Caples Lake Snow Depth

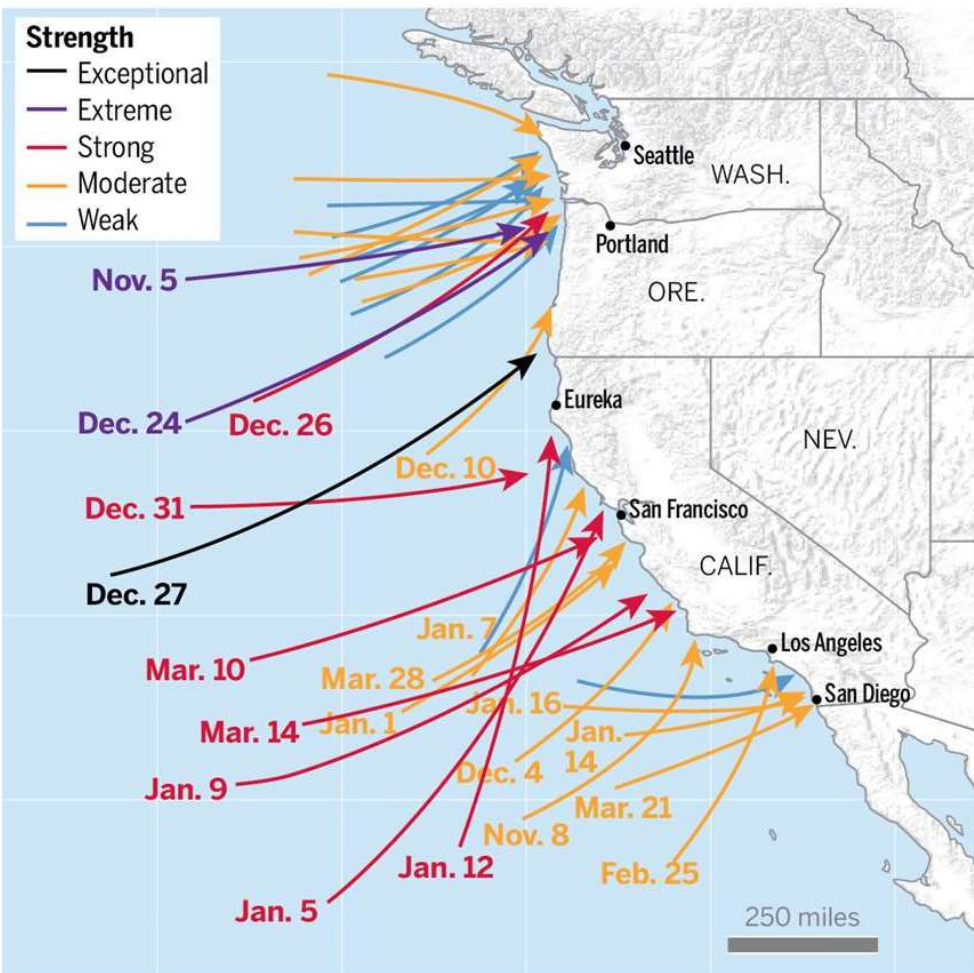


Reservoir Storage

As of 6/21/2023	Current Storage	Percent of Average	Percent of Capacity
Pardee	206,080 AF	103%	101%
Camanche	354,230 AF	109%	85%
East Bay	140,210 AF	104%	93%
Total System	700,520 AF	106%	91%

California Water Supply





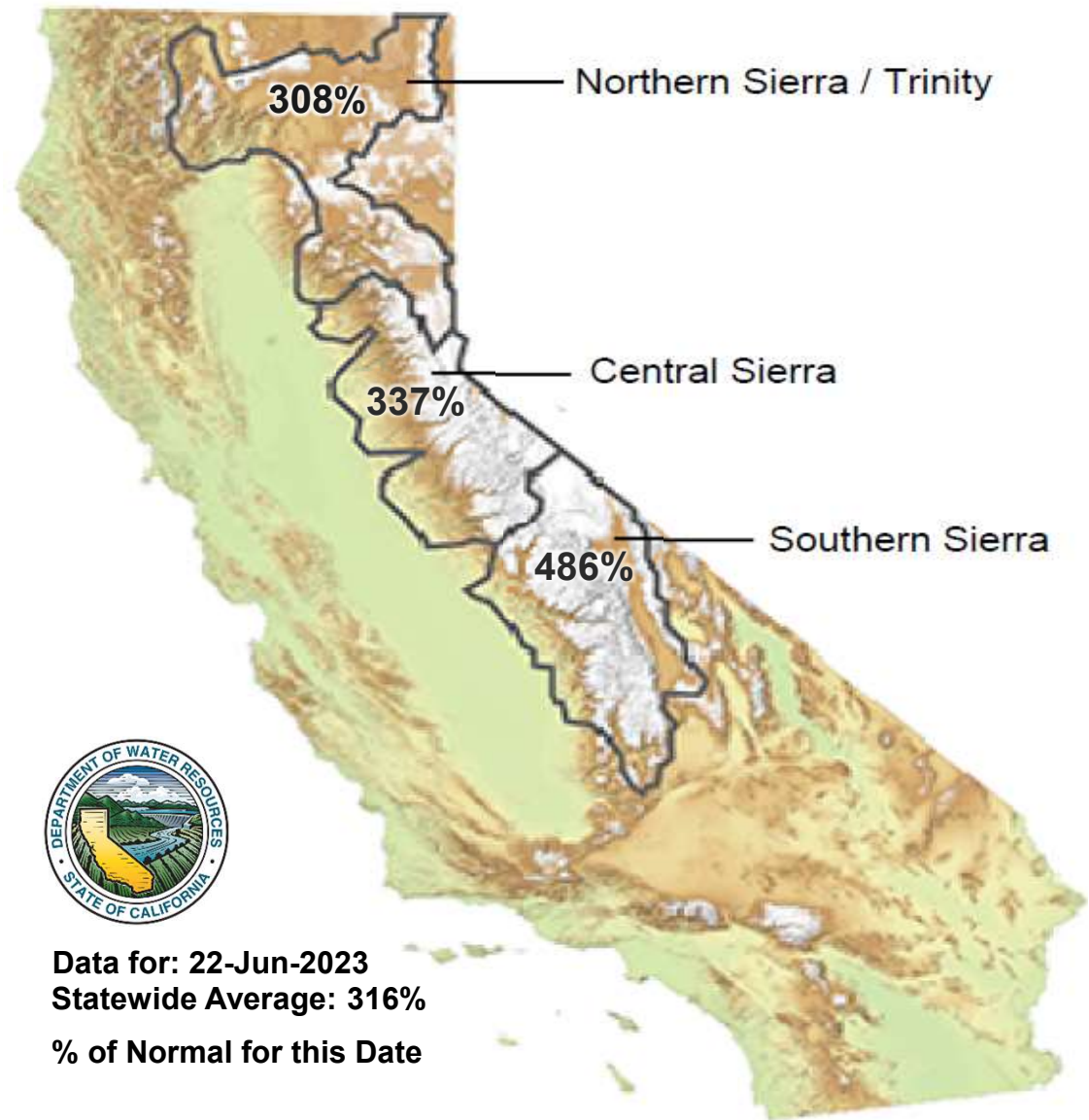
Data as of Mar. 29 Source: Center for Western Weather and Water Extremes
PAI/BAY AREA NEWS GROUP

Atmospheric River Storms

Since October, more than 30 atmospheric river storms have barreled into California, including six that were strong and one considered exceptional.

California Water Supply

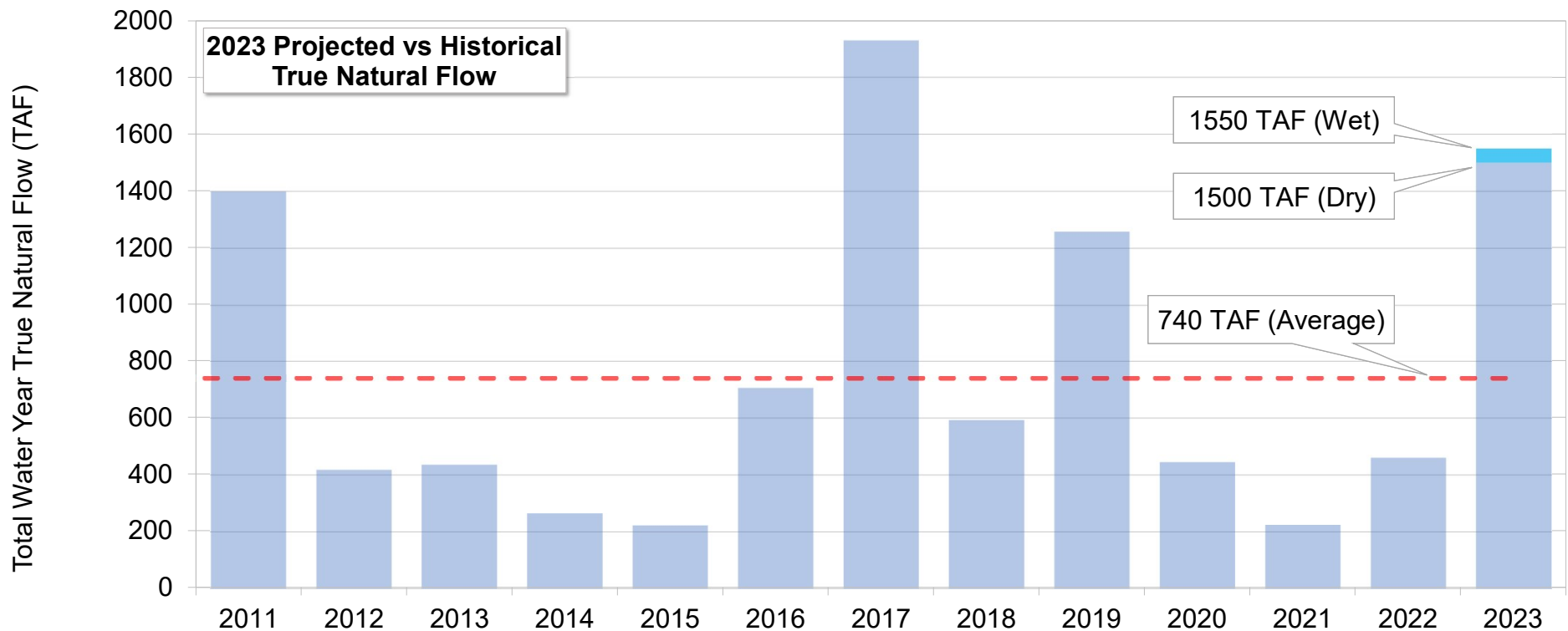
Snow Water Content Percent of Normal for this Date				
Date	North	Central	South	State
1/1/2023	139	187	209	179
2/1/2023	171	203	249	205
3/1/2023	153	199	232	194
4/1/2023	192	235	297	237
5/1/2023	216	249	336	258
6/1/2023	268	322	437	318
6/22/2023	308	337	486	316



Water Supply Projections



Projected 2023 EBMUD Unimpaired Runoff



Budget Update



Responsible Financial Stewards

- EBMUD is a not-for-profit public utility
- Rate dollars directly fund operations and capital improvements
- EBMUD is the only California water utility to receive Moody's Investors Service's highest Aaa water bond rating



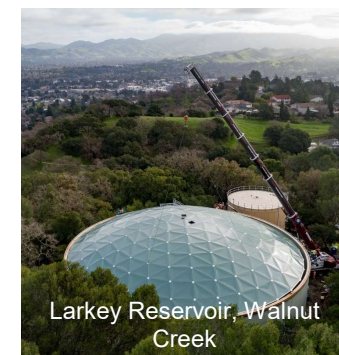
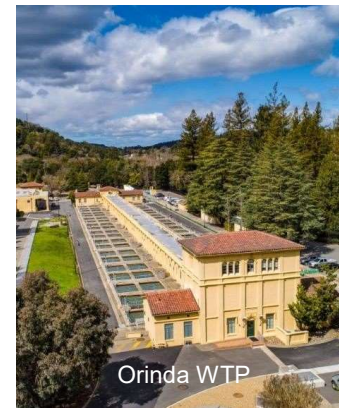
Challenges Ahead

- Aging infrastructure
- Droughts, floods and fires
- Emerging contaminants
- Changing regulations and nutrients
- Inflationary cost pressures
 - Energy, chemicals, and labor



FY 2024 & FY 2025 Budget Makes Critical Investments

- Most capital-intensive period in EBMUD history: 5-year capital improvement program increased by more than \$500 million to \$2.8 billion
- Capital plan includes major work to improve Orinda and Upper San Leandro Water Treatment Plant, 127 miles of pipeline replacement, and improvements to reservoirs, pumping plants and other critical infrastructure
- Operating cost increases driven by local inflation and global supply chain – energy, chemicals, software, and labor costs growing by 15% to 90%
- During pandemic EBMUD moderated rate increases and tapped reserves
- Rate increases in FY 2024 & FY 2025 accelerate investments in resilient and reliable water and wastewater systems of the future
- Increases are about 19 cents per day in FY 2024, and 21 cents per day in FY 2025 for the average single-family residential customer



Questions?



Camanche Reservoir Release – March 2023

